



sertec S.R.L.
Soluciones inteligentes pensando en usted

INSTALLATION GUIDE



www.sertec.com.py



021-302023 / 021-307190



sertec@sertec.com.py



Av. Gral Santos N°2555 c/ 18 de Julio
CP: 1646 (Asunción-Paraguay)

STORM 7 OBJECTIVES

It is a device that works together with the CMCE, capable of monitoring the electric field in real time in the protection area, with this information it is possible to control the performance of the CMCE and verify the atmospheric activity. The Storm 7 is designed to be used in any location, be it houses, buildings, mountains, ships, industrial plants, among others. Apart from monitoring the electric field, it also has the functionality to measure Temperature, Atmospheric Pressure, Relative Humidity accurately in addition to measuring Altitude and Electrical Pulses (lightning) these data are referential.

The Storm 7 system integrates four basic components: sensors/devices, connectivity, data processing, and a user interface. The sensors collect data from the environment where the CMCE is installed. Connectivity allows data to be sent to the cloud system, this can be via Ethernet, WiFi or mobile connectivity. Once these data are received, they are processed, validated and stored in a database. The user can view the data in the form of graphs and make queries about the historical data of interest through the web interface.



There will be relevant notifications regarding the state of the weather, the operation of the device, disconnection alerts or low drainage of the CMCE to carry out revisions in the installation.

- Drain record
- Recording of Temperature, Pressure, Humidity and Altitude
- PEM Records (electromagnetic pulse)

DEVICE DESIGN

DESCRIPTION:

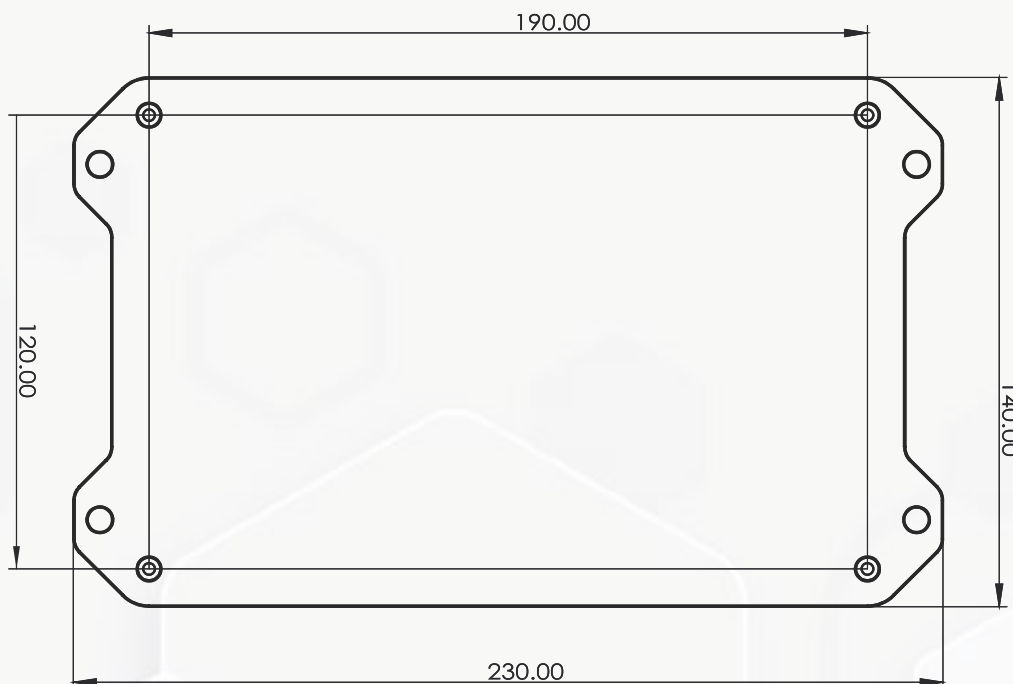
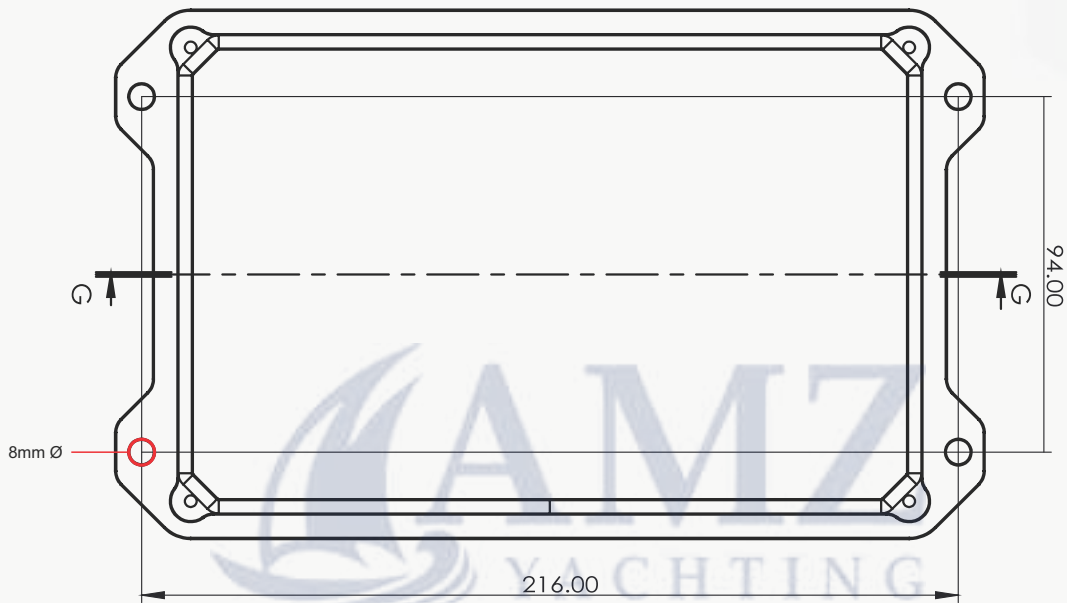
1. Antenna
2. LCD screen
3. 110/240 VAC - 12/24VDC
4. 5 VDC OUTPUT - USB TYPE A
5. 5 VDC INPUT - USB TYPE A
6. INPUT 5 VDC - USB TYPE B MINI
7. Ventilation outlet
8. Ethernet port
9. CMCE Downconductor Accommodations
10. QR code to access Storm documents
11. ON/OFF switch



STORM 7 INSTALLATION

The installation of the device is a simple task and can be summarized in a few steps, but for that we must identify the holes that must be made.

The diameter of the perforation is 8mm, it must be taken into account for the place where the fixation must be made.



STORM 7 INSTALLATION (LAND)

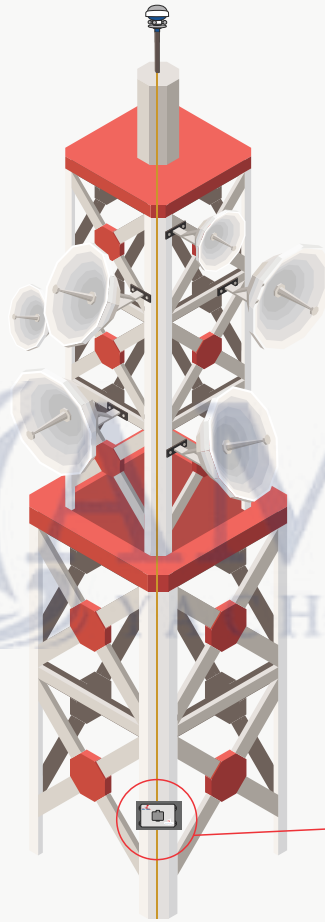


The corresponding holes must be made for 8mm screws.

The necessary type of plug must be available, depending on the type of wall for greater security in fixing.

STORM 7 INSTALLATION (LAND)

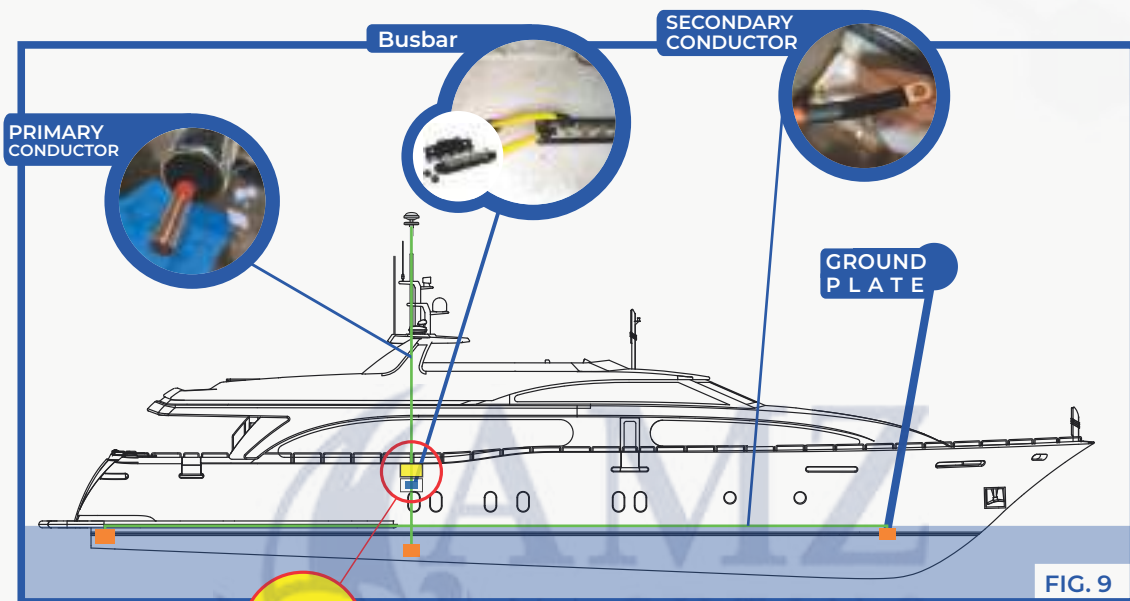
In towers, the fixation, a base must be manufactured that is secure by the tower (consult the manufacturer), the measurements of Storm 7 must be taken into account.



The base can be fixed with clamps or directly by the tower structure (take into account its rigidity).

STORM 7 INSTALLATION (MARINE)

Installation on boats, several factors must be taken into account, the Storm 7 marine model will come with a 12/24v power supply, prepared for the boat.



The Storm 7, marine model, should be installed before the busbar, where the drop cable is accessible.

The Storm 7 - Marine model must be requested from the manufacturer in advance to see the conditions of the boat, to see what will be necessary for the installation.



STORM 7 INSTALLATION

The down conductor must pass properly inside the CT to accurately verify Storm 7 drainage..



Each installation is different, there may be cases where we do not have resources such as electrical or network connection, each Storm 7 can be adapted to what the client needs, for custom projects, you can contact the sales department to manage the necessary equipment model for you.

